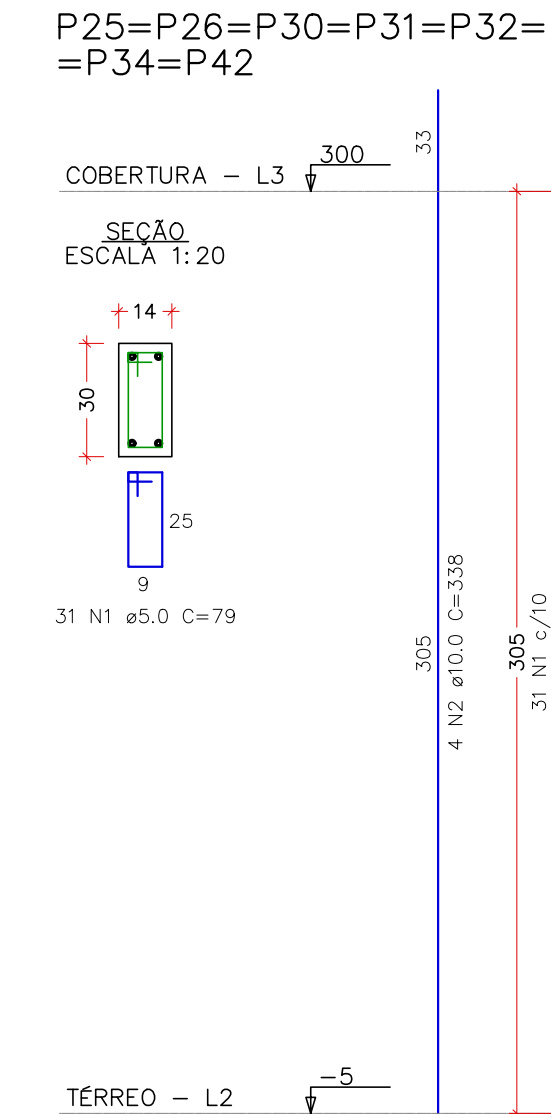
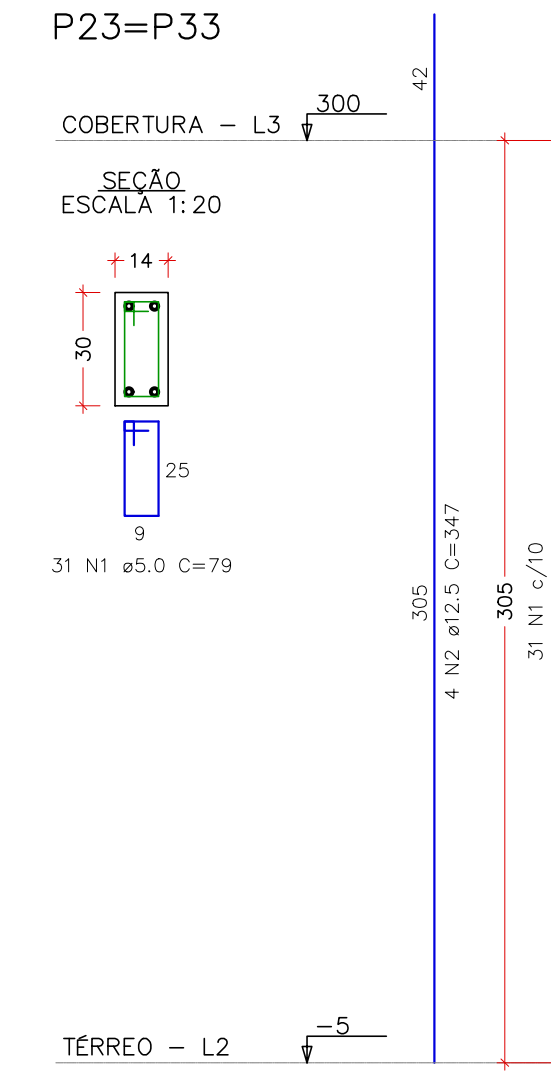
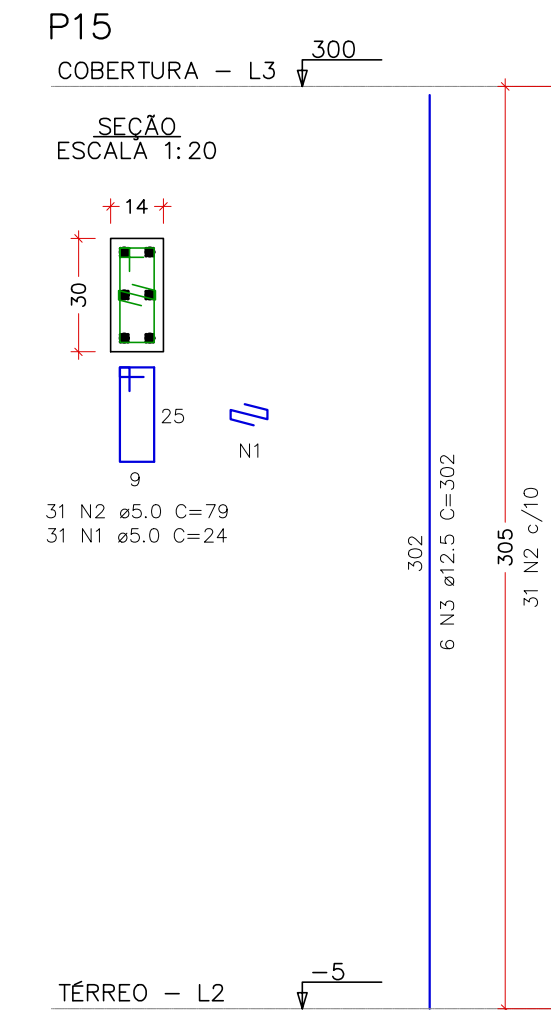
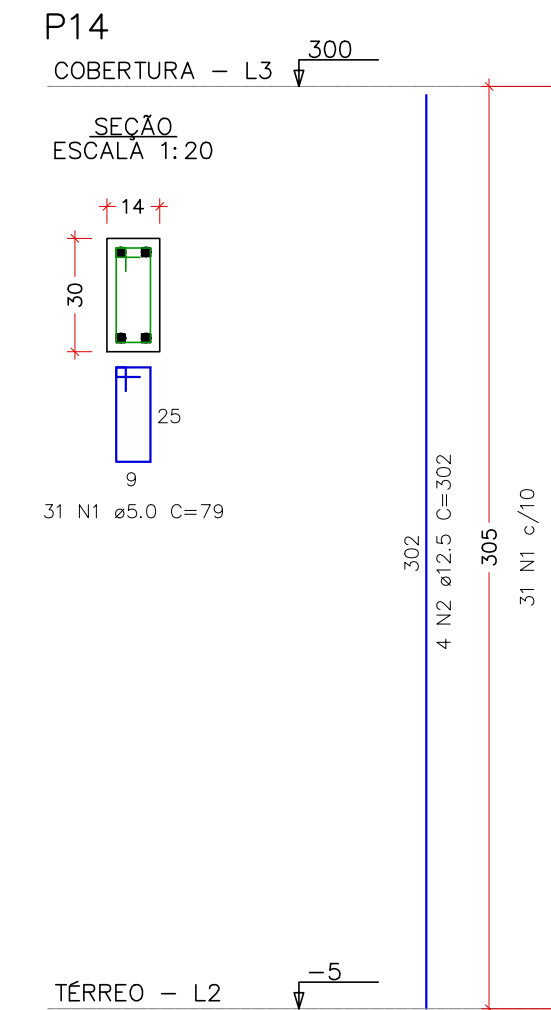
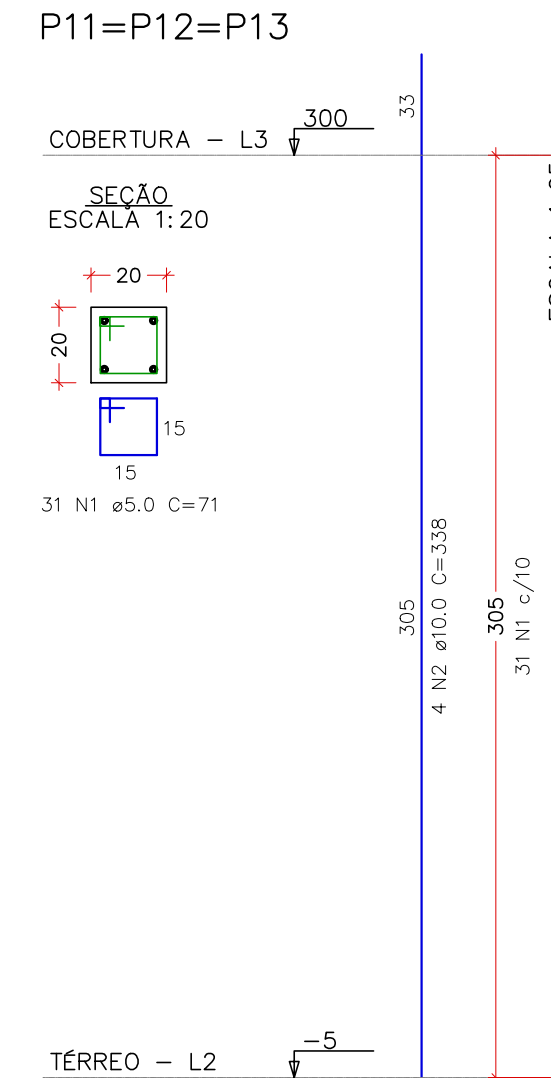
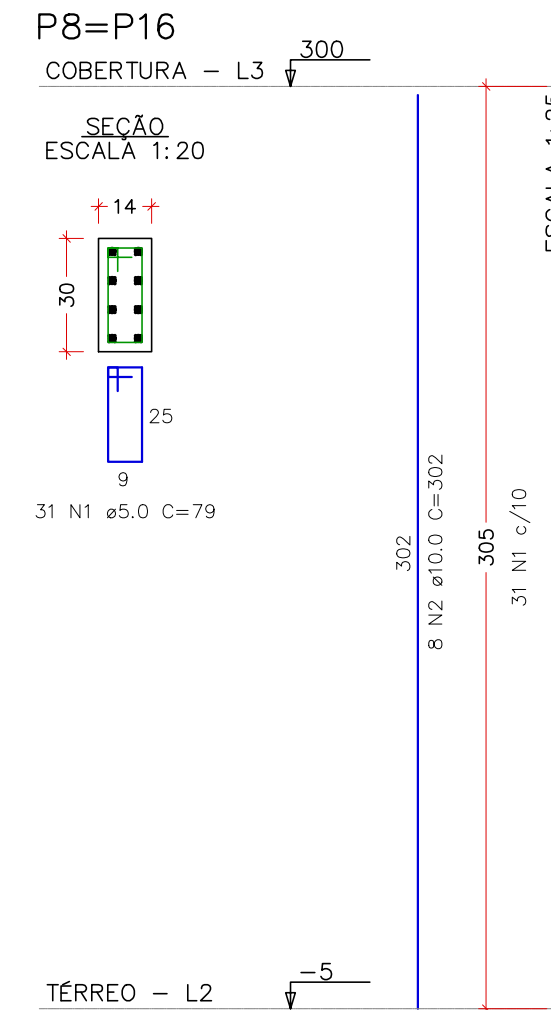
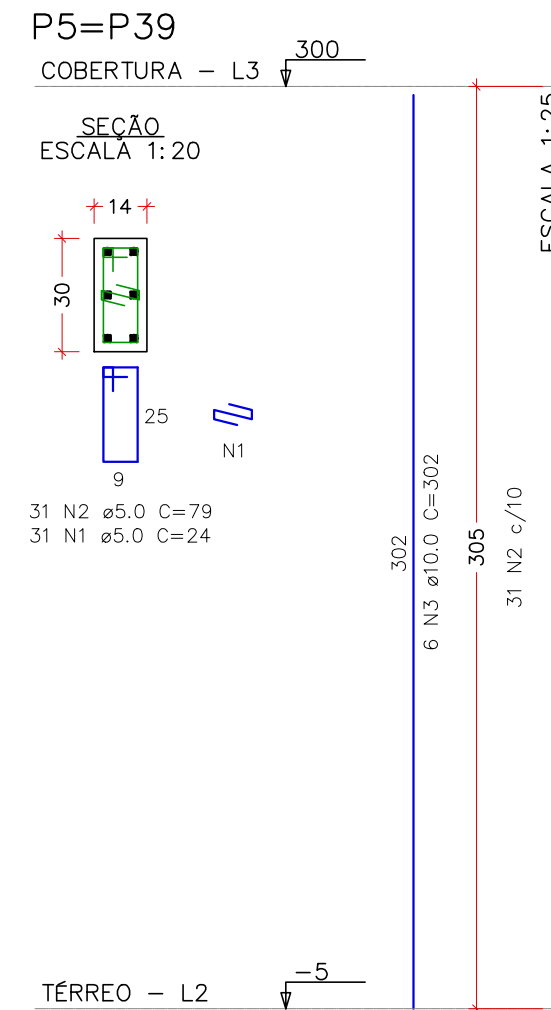
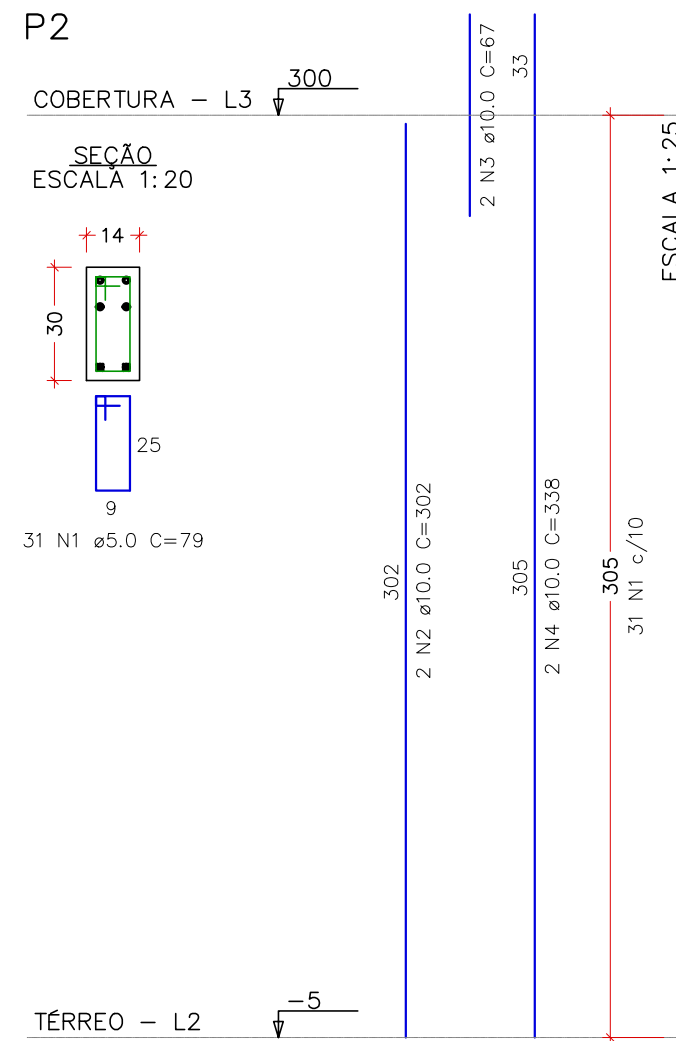
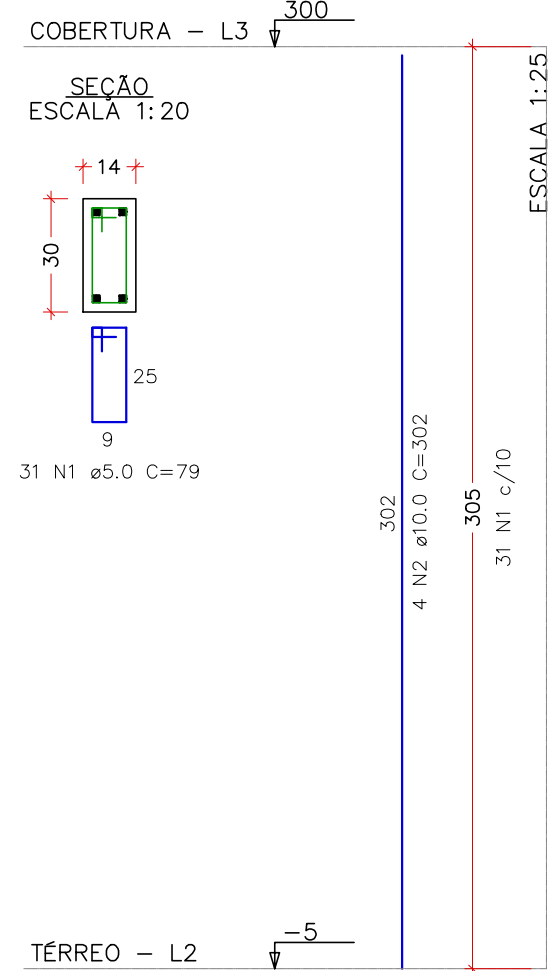


PROJETO ESTRUTURAL – CONSTRUÇÃO DA UBS DO BAIRRO MORUMBI
ESCALA INDICADA

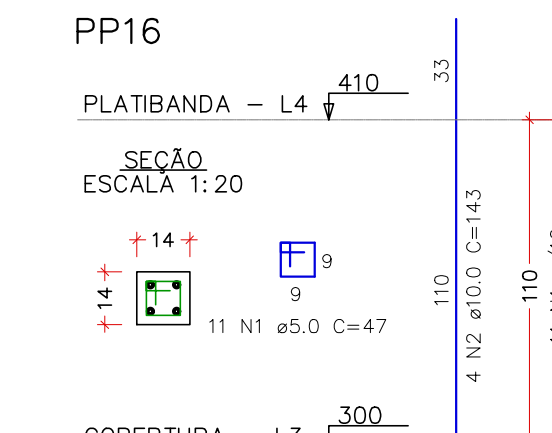
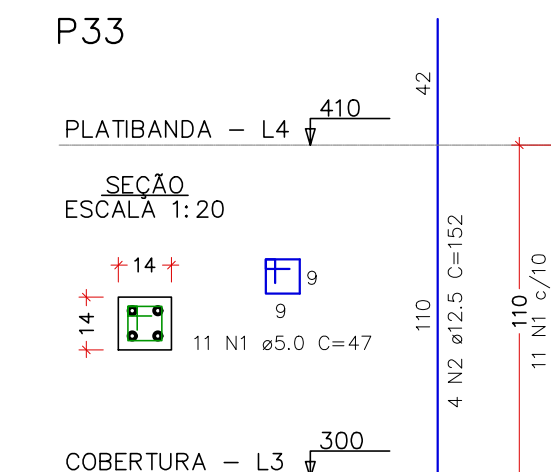
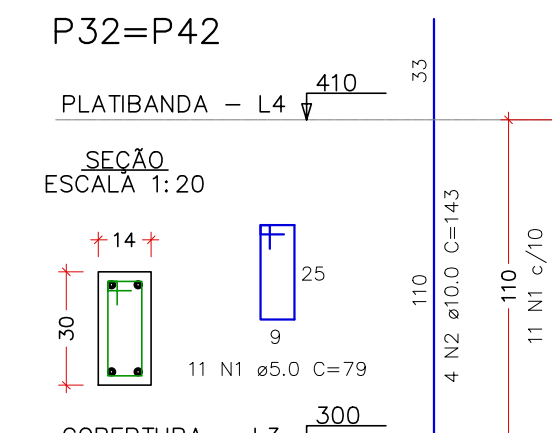
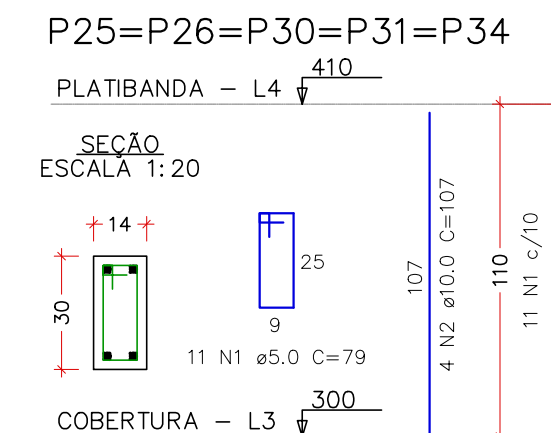
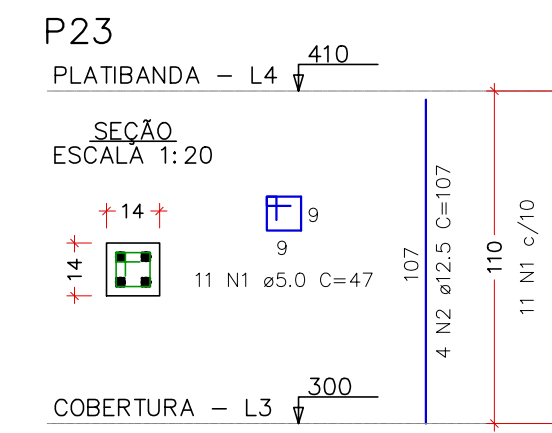
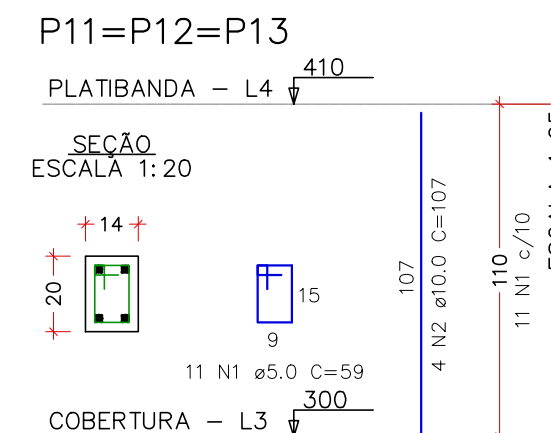
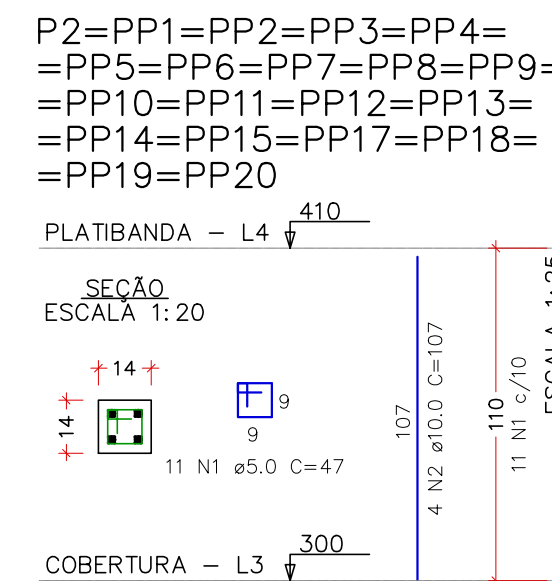
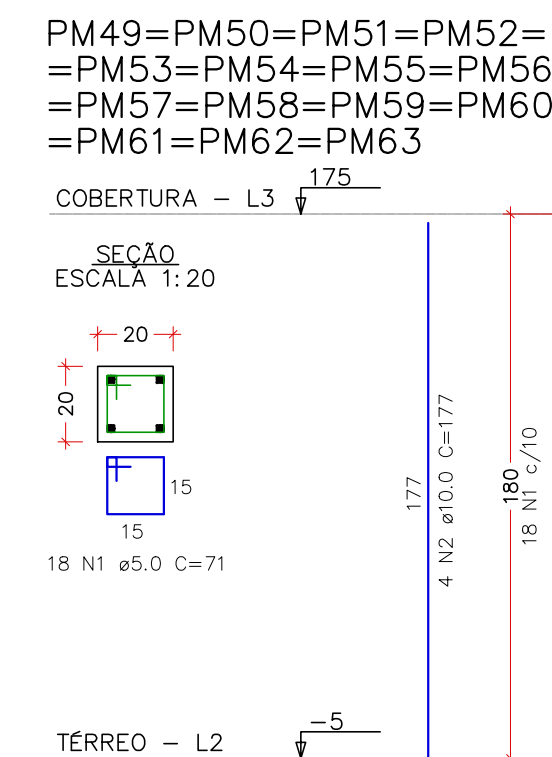
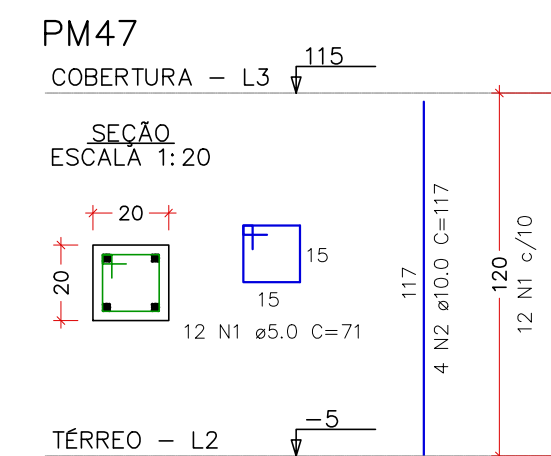
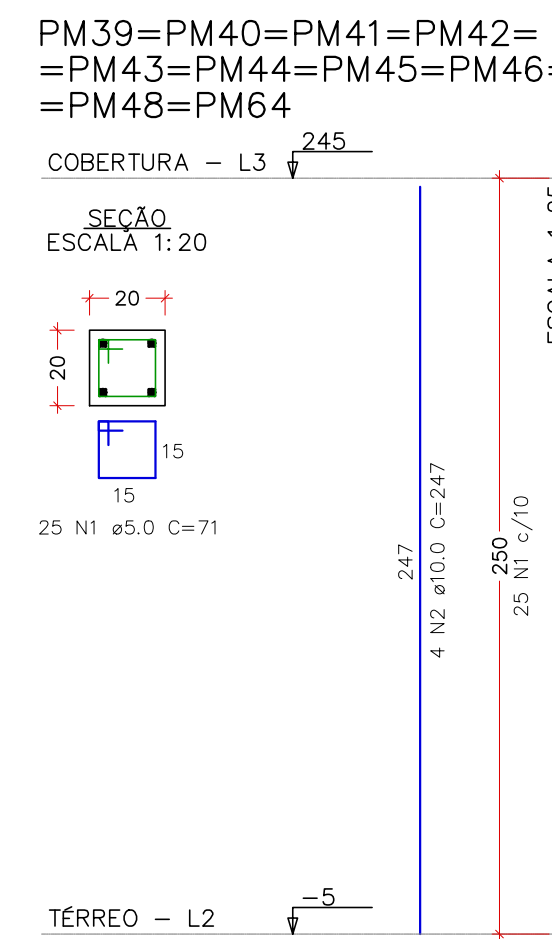
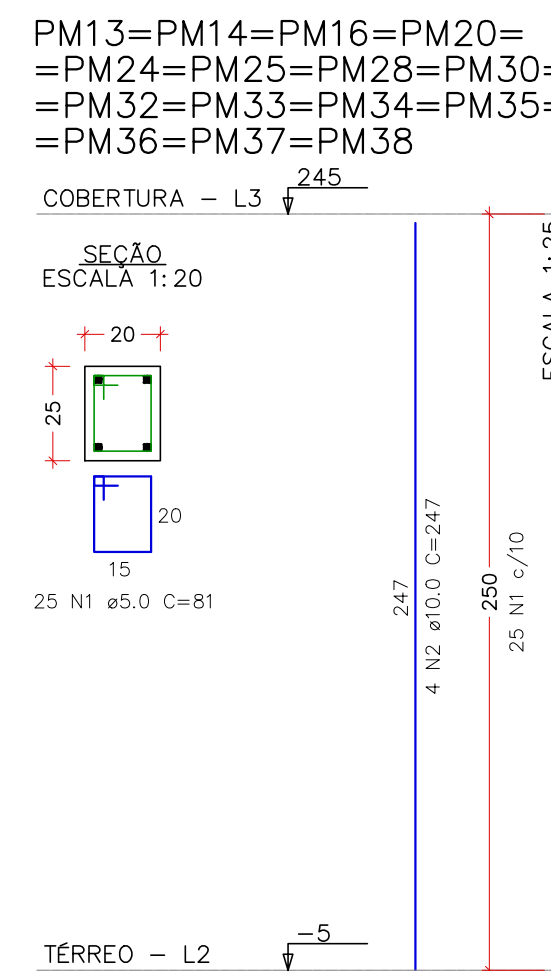
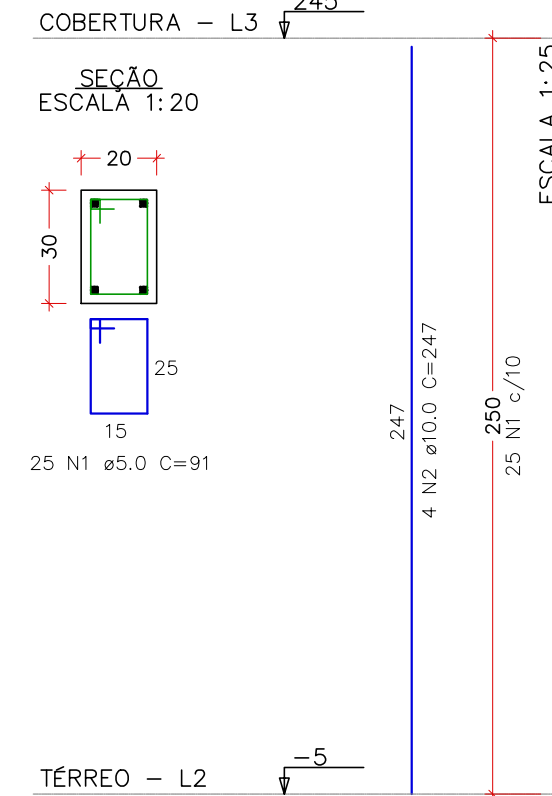
P1=P3=P4=P6=P7=P9=
=P10=P17=P18=P19=P20=
=P21=P22=P24=P27=P28=
=P29=P35=P36=P37=P38=
=P40=P41=P43=P44=P45=
=P46



RELAÇÃO DO AÇO						
ELEMENTO	AÇO	N	DIAM (mm)	QUANT	C.UNIT (cm)	C.TOTAL (cm)
27xP1	CA60	1	5.0	837	79	66123
P2	CA50	2	10.0	108	302	32616
	CA60	1	5.0	31	79	2449
	CA50	2	10.0	2	302	604
	CA50	3	10.0	2	67	134
	CA60	1	5.0	62	338	676
2xP5	CA50	4	10.0	24	24	1488
	CA60	2	5.0	62	79	4898
	CA50	3	10.0	12	302	3614
2xP8	CA60	1	5.0	62	79	4898
3xP11	CA50	2	10.0	16	302	4832
	CA60	1	5.0	63	71	6603
P14	CA50	2	10.0	12	338	4056
	CA60	2	12.5	31	302	1208
P15	CA60	1	5.0	31	24	744
	CA60	2	5.0	31	79	2449
	CA50	3	12.5	6	302	1812
2xP23	CA60	1	5.0	62	79	4898
	CA50	2	12.5	8	347	2776
7xP25	CA60	1	5.0	217	79	17143
	CA50	2	10.0	28	338	9464

RESUMO DO AÇO			
AÇO	DIAM (mm)	C.TOTAL (m)	PESO + 10% (kg)
CA50	10.0	560.1	379.8
CA60	12.5	58	61.4
CA60	5.0	1141.4	193.5
PESO TOTAL (kg)			
CA50	441.2		
CA60	193.5		
VOLUME DE CONCRETO (C-30) = 5.87 m³			
ÁREA DE FORMA = 122.73 m²			

PM2=PM4=PM5=PM7

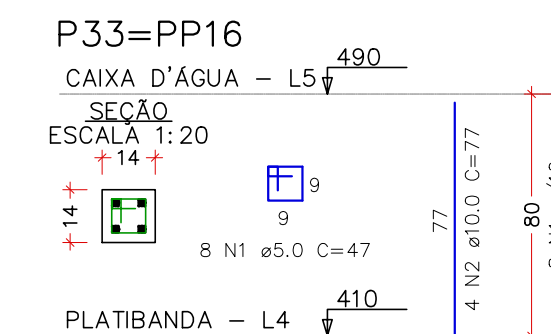
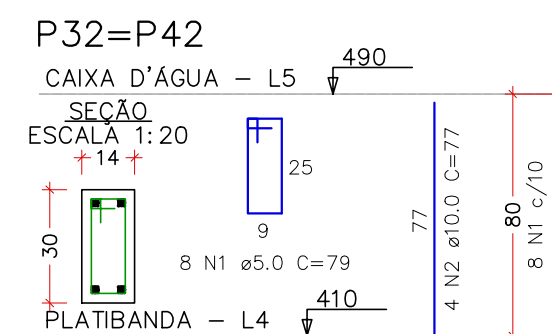


RELAÇÃO DO AÇO						
ELEMENTO	AÇO	N	DIAM (mm)	QUANT	C.UNIT (cm)	C.TOTAL (cm)
20xP2	CA60	1	5.0	220	47	10340
	CA50	2	10.0	80	107	8560
3xP11	CA60	1	5.0	33	59	1947
	CA50	2	10.0	12	107	1284
P23	CA60	1	5.0	11	47	517
	CA50	2	12.5	4	107	428
5xP25	CA60	1	5.0	55	79	4345
	CA50	2	10.0	20	107	2140
2xP32	CA60	1	5.0	22	79	1738
	CA50	2	10.0	8	143	1144
P33	CA60	1	5.0	11	47	517
	CA50	2	12.5	4	152	608
PP16	CA60	1	5.0	11	47	517
	CA50	2	10.0	4	143	572

RESUMO DO AÇO			
AÇO	DIAM (mm)	C.TOTAL (m)	PESO + 10% (kg)
CA50	10.0	137	92.9
CA60	12.5	10.4	11
CA60	5.0	199.2	33.8
PESO TOTAL (kg)			
CA50	103.9		
CA60	33.8		
VOLUME DE CONCRETO (C-30) = 0.91 m³			
ÁREA DE FORMA = 23.19 m²			

RELAÇÃO DO AÇO						
ELEMENTO	AÇO	N	DIAM (mm)	QUANT	C.UNIT (cm)	C.TOTAL (cm)
2xP32	CA60	1	5.0	16	79	1264
	CA50	2	10.0	8	77	616
2xP33	CA60	1	5.0	16	47	752
	CA50	2	10.0	8	77	616

RESUMO DO AÇO			
AÇO	DIAM (mm)	C.TOTAL (m)	PESO + 10% (kg)
CA50	10.0	12.3	8.4
CA60	5.0	20.2	3.4
PESO TOTAL (kg)			
CA50	8.4		
CA60	3.4		
VOLUME DE CONCRETO (C-30) = 0.10 m³			
ÁREA DE FORMA = 2.30 m²			



REV. 01	13/09/24	ALTERAÇÕES CONFORME SOLICITAÇÕES DA VIGILÂNCIA SANITÁRIA NO PROJ. ARQUITETÔNICO	DAC
REV. 00	01/11/23	EMIÇÃO INICIAL	DAC
REVISÃO	DATA	DESCRIÇÃO	RESP.

CLIENTE



Prefeitura Municipal de Pouso Alegre

PROJETO



DAC Engenharia

Rua Cel. Joaquim Francisco, n° 341
Bairro Varginha
CEP: 37501-052 - Itajubá / MG
Tel: (35) 2143-9087
www.docengenharia.com.br

COORDENAÇÃO DE PROJETOS

DENIS DE SOUZA SILVA CREA-MG-127.216/D

RESPONSÁVEL TÉCNICO

ALOISIO C. FERREIRA CREA-MG-97.132/D

RESPONSÁVEL TÉCNICO

RAFAEL B. CARREIRA CAU: 00A155411-5